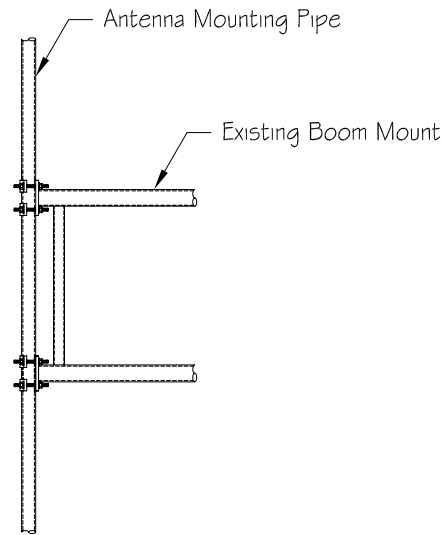
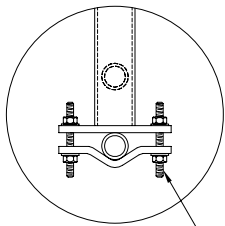


Typical Installation



CONNECTION I



1/2" x 8" H.D.G. Threaded Rod Used With Saddle Clamp To Secure Antenna Mounting Pipe to Boom Mount (Connection I)

STEEL PARTS

ITEM NO.	PART NO.	DESCRIPTION	QTY.
1*	CPS125575-50-01	Saddle Clamp for 1-1/4" - 5-3/4" Round Leg	4
2	MP2540X084	2-1/2" Sch 40 x 84" Long Antenna Mounting Pipe	1

HARDWARE

ITEM NO.	PART NO.	DESCRIPTION	QTY.
1	TR50X0800G	1/2" x 8" H.D.G. Threaded Rod	8
2	NU050G	1/2" H.D.G. Nuts	16
3	WLO50G	1/2" H.D.G. Lockwashers	16
4	WFO50G	1/2" H.D.G. Flatwashers	8

** Flatwashers Are To Be Used At All Slotted Hole Locations !! **

WEIGHT & ENGINEERING INFORMATION

KIT NO.	WEIGHT (lbs.)	DESCRIPTION	CaAc (Sq. Ft.)
KSA2540P084-01	51.76	2-1/2" Sch 40 x 84" Long Pipe	N/A

KIT USE INFORMATION

- 1.) This Kit Is Designed To Be Used With Standard Boom Mounts.
- 2.) Steel Parts Indicated Above With An "*" Will Be Packed With The Hardware.



PH# (812) 853-0595
 FAX# (812) 853-6652
 2855 HIGHWAY 261
 NEWBURGH, IN. 47630

REV. #	DESCRIPTION	DATE	APP.	DRAWN	DATE
				J.J.B.	11-16-00
				CHECK	DATE
				APPROVAL	DATE

THIRD ANGLE PROJECTION	COMPANY CONFIDENTIAL INFORMATION CONTAINED HEREIN IS CONFIDENTIAL. IT IS TO BE USED SOLELY FOR THE PURPOSE PROVIDED, AND IT IS NOT TO BE DISCLOSED TO OTHERS WITHOUT THE PRIOR WRITTEN CONSENT OF TOWER INNOVATIONS	TOLERANCES .X± 3/32" ANGLES± 2" .XX± 3/32" DRILLED HOLE± #1/32" .XXX± 1/16" BURNED HOLE± #1/16"	UNLESS OTHERWISE SPECIFIED DIMENSIONS ARE IN: INCHES	DWG NO. KSA2540P084-01	REV 0
------------------------	---	--	---	---------------------------	----------

TITLE
 STD 2-1/2" SCH 40 X 84" PIPE

DO NOT SCALE DRAWING