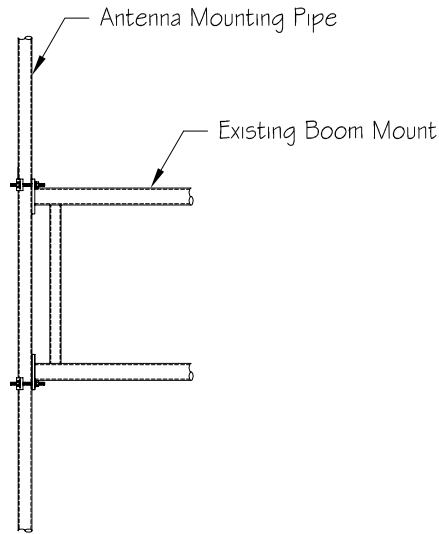
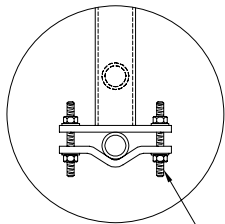


Typical Installation



CONNECTION 1



1/2" x 8" H.D.G. Threaded Rod Used With Saddle Clamp To Secure Antenna Mounting Pipe to Boom Mount (Connection 1)

STEEL PARTS

ITEM NO.	PART NO.	DESCRIPTION	QTY.
1*	CPS125575-50-01	Saddle Clamp for 1-1/4" - 5-3/4" Round Leg	2
2	MP2040-096	2" Sch 40 x 96" Long Antenna Mounting Pipe	1

HARDWARE

ITEM NO.	PART NO.	DESCRIPTION	QTY.
1	TR50X0800G	1/2" x 8" H.D.G. Threaded Rod	4
2	NU050G	1/2" H.D.G. Nuts	8
3	WLO50G	1/2" H.D.G. Lockwashers	8
4	WFO50G	1/2" H.D.G. Flatwashers	4

\*\* Flatwashers Are To Be Used At All Slotted Hole Locations !! \*\*

WEIGHT & ENGINEERING INFORMATION

KIT NO.	WEIGHT (lbs.)	DESCRIPTION	CaAc ( Sq. Ft.)
KSA2040P084-01	35.09	2" Sch 40 x 96" Long Pipe	N/A

KIT USE INFORMATION

- 1.) This Kit Is Designed To Be Used With Standard Boom Mounts.
- 2.) Steel Parts Indicated Above With An "\*" Will Be Packed With The Hardware.



PH# (812) 853-0595  
 FAX# (812) 853-6652  
 2855 HIGHWAY 261  
 NEWBURGH, IN. 47630

REV. #	DESCRIPTION	DATE	APP.	DRAWN	DATE
				J.J.B. <td>4-30-02</td>	4-30-02
				CHECK <td>DATE</td>	DATE
				APPROVAL <td>DATE</td>	DATE

THIRD ANGLE PROJECTION 	COMPANY CONFIDENTIAL INFORMATION CONTAINED HEREIN IS CONFIDENTIAL. IT IS TO BE USED SOLELY FOR THE PURPOSE PROVIDED, AND IT IS NOT TO BE DISCLOSED TO OTHERS WITHOUT THE PRIOR WRITTEN CONSENT OF TOWER INNOVATIONS	TOLERANCES		UNLESS OTHERWISE SPECIFIED DIMENSIONS ARE IN: INCHES	DWG NO. <b>KSA2040P084-01</b>	REV -
		.X± 3/32"	ANGLES± 2°			
		.XX± 3/32"	DRILLED HOLE± #1/32"			
	.XXX± 1/16"	BURNED HOLE± #1/16"			DO NOT SCALE DRAWING	

TITLE  
 STANDARD 2" SCH. 40 x 96" PIPE